

In the Pipeline

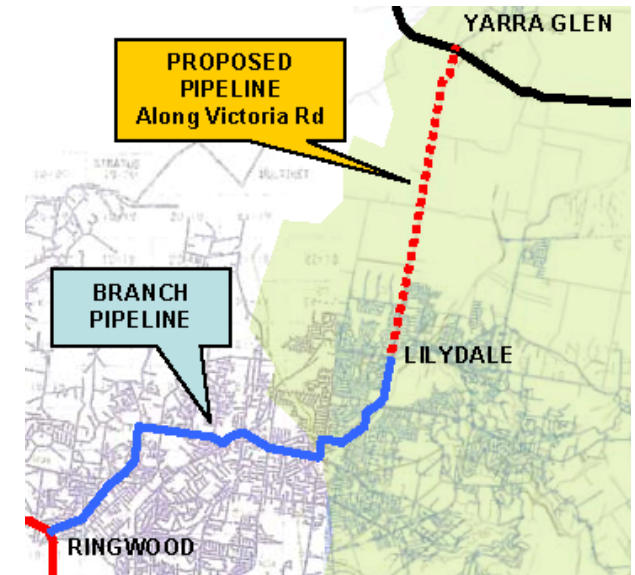


Gas supply boost for eastern suburbs – Lilydale Gas Pipeline

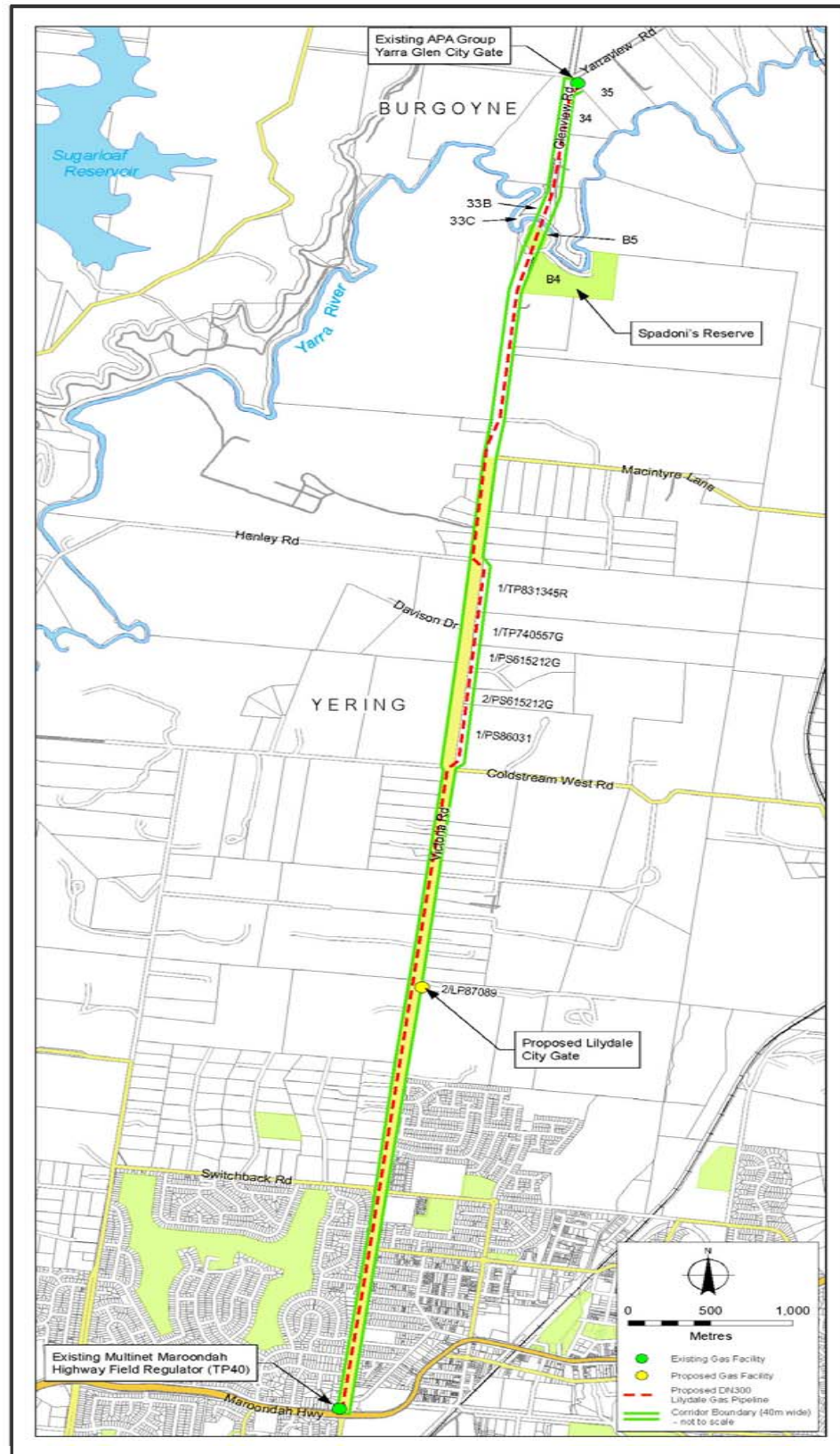
Multinet is Victoria's largest distributor of natural gas and is working with third party providers to install a pipeline of approximately 10km in length along Victoria Road - please see map to the right.

"In preparation for winter 2012, and following growing demand in the outer eastern suburbs, we have committed to increasing the volume of natural gas available to customers to ensure they receive continuity of supply when they need it most," said Mr Mike Fajdiga, Chief Operating Officer Multinet Gas.

Initial surveying work for the project commenced in May 2010 and pipeline construction is scheduled to be completed by the end of this year. While locals may experience some inconvenience during the project – such as traffic delays – Multinet views the safety of its people, customers and the general public is of the highest priority, and will ensure experienced traffic controllers are on site to aid the traffic flow.



Gas Pipeline Route along Victoria Rd



Latest news – August start

This community newsletter has been produced to coincide with the third community display and information session to be held at the Chirside Park Shopping Centre on Thursday 28 & Friday 29 July 2011.

The pipeline will be constructed in accordance with the Pipelines Act 2005 and Pipelines Regulations 2007. The relevant legislation also calls upon the Environment Effects Act 1978, the Planning and Environment Act 1987, the Land Acquisition and Compensation Act 1986, and the Aboriginal Cultural Heritage Legislation at State and Commonwealth levels.

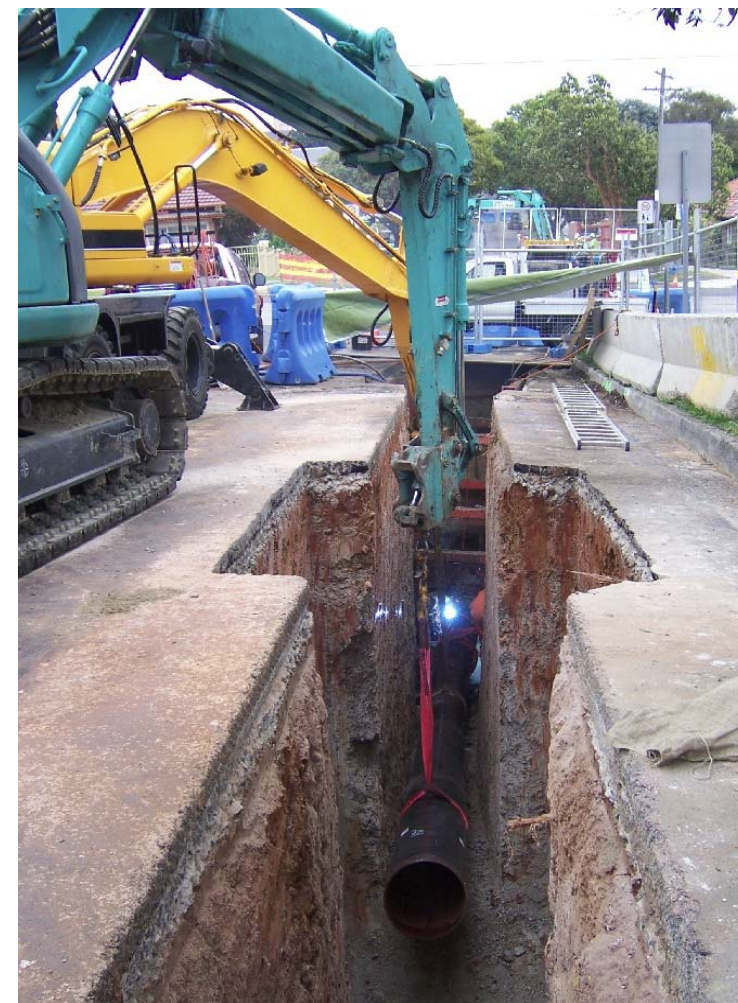
We have appointed construction sub-contractor Diona to do the works; therefore you may see the logo below on trucks and machinery:



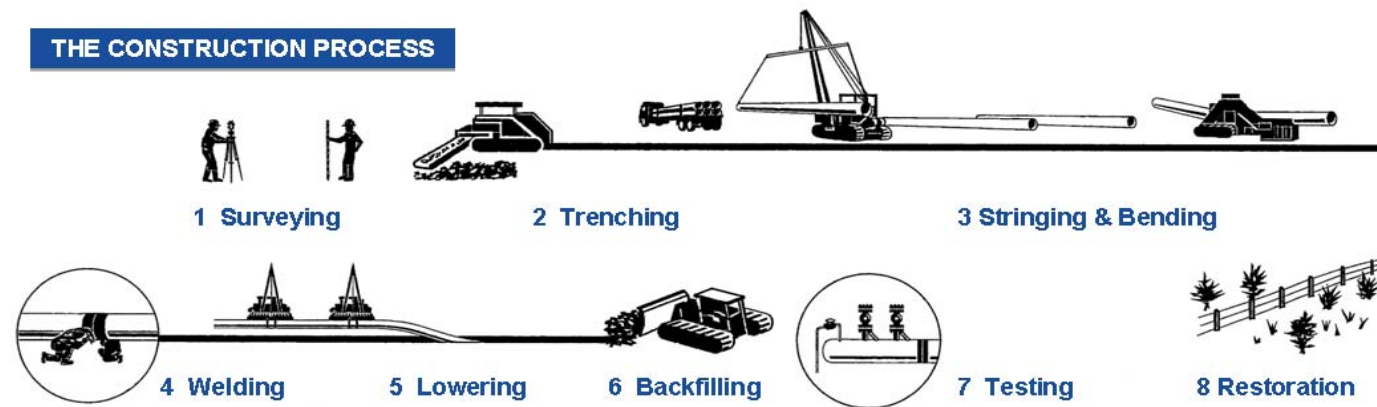
Diona is a multi-utility infrastructure company with a reputation for high quality work.

The majority of the pipeline in roads will be laid in trench sections up to 72 to 144 metres long and on private land up to 240 metres long.

"The aim is to open a trench, lower the welded pipe sections into the trench, backfill and temporarily reinstate each day," said Project Manager, Jonathan Spink.



THE CONSTRUCTION PROCESS



1. **Surveying** Site surveys and studies are undertaken to ensure the pipeline is located and built to environment and heritage protection measures.
2. **Trenching** The trench is excavated for the pipe, with excess materials to be removed to a clean fill site.
3. **String/bend** Pipe is laid end-to-end adjacent to the trench. Where necessary the pipe is bent to conform to land contours.
4. **Welding** Pipe segments are welded together and the joints are sealed.
5. **Lowering** The pipe is lowered into the trench in sections by cranes or excavators.
6. **Backfilling** The trench is filled and compacted in layers. The road pavement is then constructed to Council specifications.
7. **Testing** The entire pipeline is pressure tested with water to ensure the integrity of the pipe and welded joints.
8. **Restoration** Following construction, the grassed road reserve is restored as close as possible to its original condition.



Traffic Management

An essential part of any major project is to ensure the safety of our people, customers and local residents. With construction taking place along a busy road, it is essential traffic is safely managed.

We have approved traffic management plans from both Yarra Ranges Shire and VicRoads, and you will see experienced traffic controllers in place at each worksite along Victoria Rd for the duration of the project.

We apologise that there will be some delays, however please acknowledge that safety must come first at all times. We appreciate your patience and cooperation with the traffic control directions during this most important project.

In the Pipeline



Safety in design

In Australia, pipelines of this type are required to meet stringent safety standards. The project will comply with the requirements of the Pipelines Act 2005, its regulations, codes and standards, and Australian Standard AS2885.

With a wall thickness of 13.5 millimeters in built up residential areas the pipe has a high fracture toughness to ensure safety against damage. Welding is carried out by specialist pipeline welders then each weld is ultra-sound tested to assure welding integrity. Prior to commissioning the pipeline is sealed off, filled with water and pressurized to 150 percent of the future gas pressure. This pressure is held and monitored over a 24 hour period to check the entire pipeline for integrity.

The 30cm diameter pipeline will be installed at a depth of 1.0 to 1.2 metres.

Community information sessions

A Community Display and information session will be run for two days at the Chirnside Park Shopping Centre with representatives in attendance to answer questions from the community:

Thursday July 28 2011
Friday July 29 2011

Stakeholder Manager
Martin Wettenhall
Tel: 0419 761 849

Community Relations
Rob Magennis
Tel: 8551 7116



Construction contacts



To quickly address any construction issues first contact should be made directly with Diona:

Tom Ryan
Project Engineer
Tel: 0407 683 454

John O'Connor
Project Manager
Tel: 0412 007 939

Multinet Gas

Multinet owns the distribution network assets used to transport gas from the high-pressure transmission network to approximately **660,000** residential, commercial and industrial gas users. Multinet's network covers an area of 1,790 square kilometres in Melbourne's inner and outer eastern and south eastern suburbs. It's distribution network includes 164 kilometres of transmission pressure pipelines and 9,866 kilometres of distribution mains.